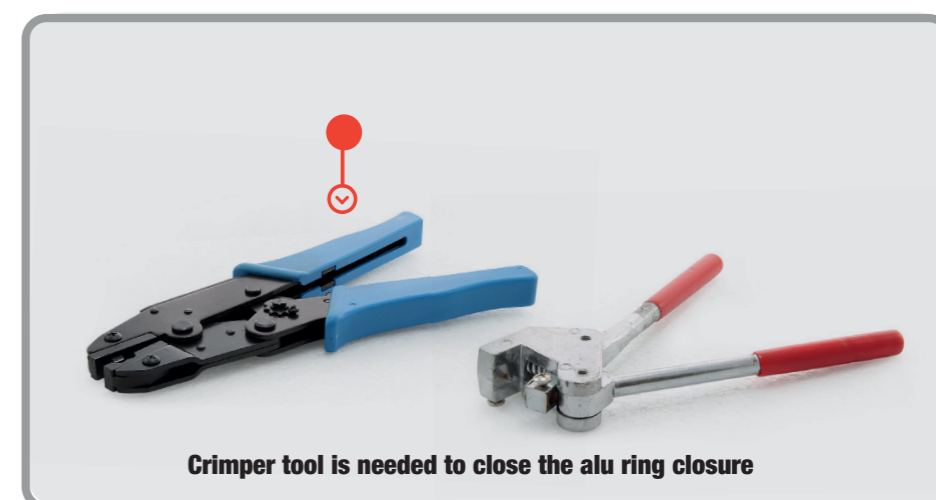
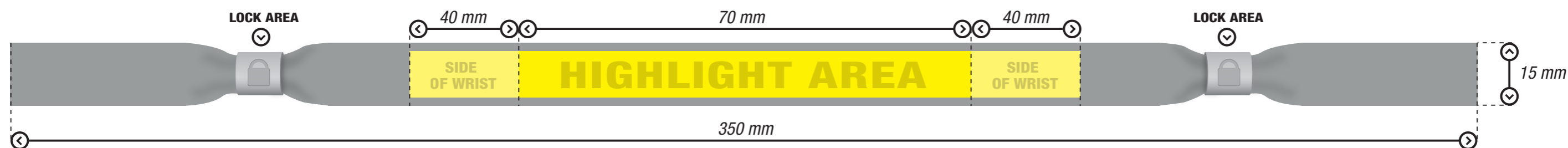


TEXTIL WRISTBAND TECHNICAL INFORMATION

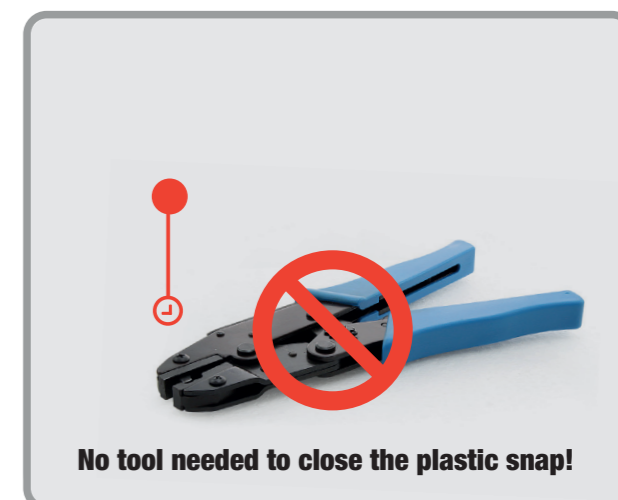
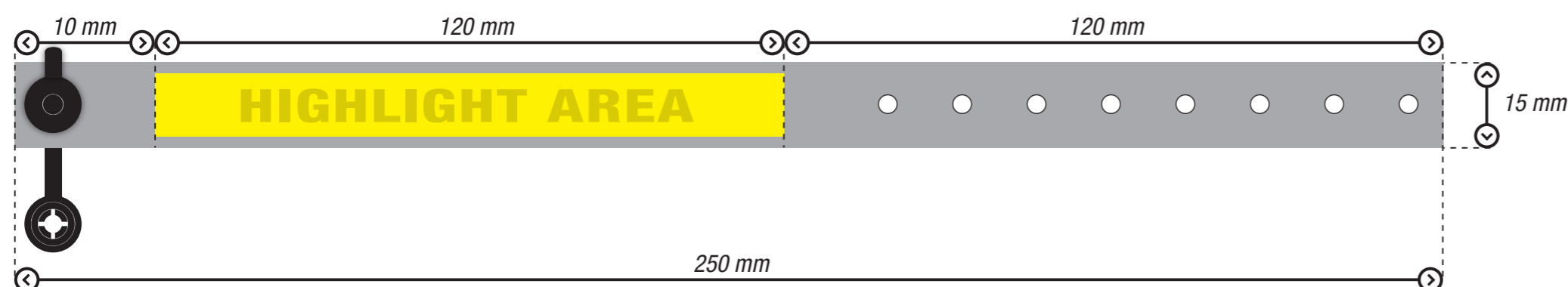
1. TEXTIL WRISTBAND WITH ALU RING CLOSURE

Available in 2 material options: satin polyester or light satin polyester (thinner material)

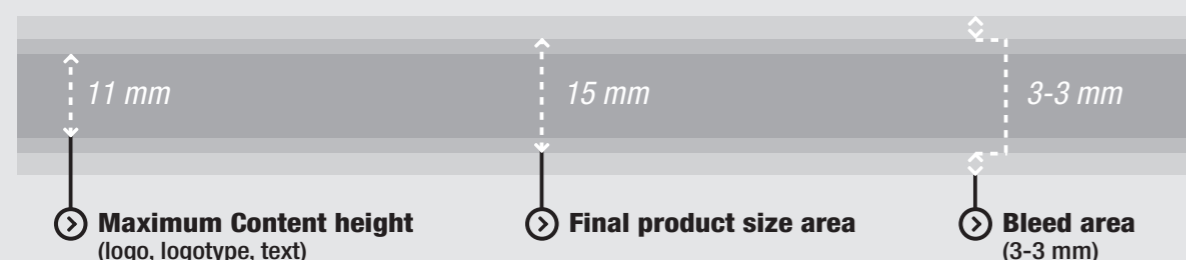


2. TEXTIL WRISTBAND WITH PLASTIC SELF LOCK CLOSURE

Available in: satin polyester material



3. PRINT INFORMATION



11 mm: Please keep important parts (logo/text) away from the edges. Place these elements 2 mm away from the edge to avoid cutting them during printing process.

15 mm: 15 mm is the width of the final product

21 mm: Bleed area: 3 mm should be added both on the top and bottom to the finished size of the wristband. Background should be 21 mm high (3+15+3 mm). Only 15 mm in the middle will be visible on the final product, but we need 3 mm on both top and bottom for security reasons to avoid white edges during printing process.

4. TECHNICAL INFORMATION / INSTRUCTIONS:

- wristbands are made from 100% polyester material
- wristbands are produced with full color sublimation printing technology (the backside of the wristband is white)
- we expect graphic files in vector .eps, .pdf or .ai file or at least min. 300 dpi .jpg file
- colors should be given according to CMYK scale. (In case of Pantone colors the result will be slightly different from the expected color)

5. ADDITIONAL OPTIONS:

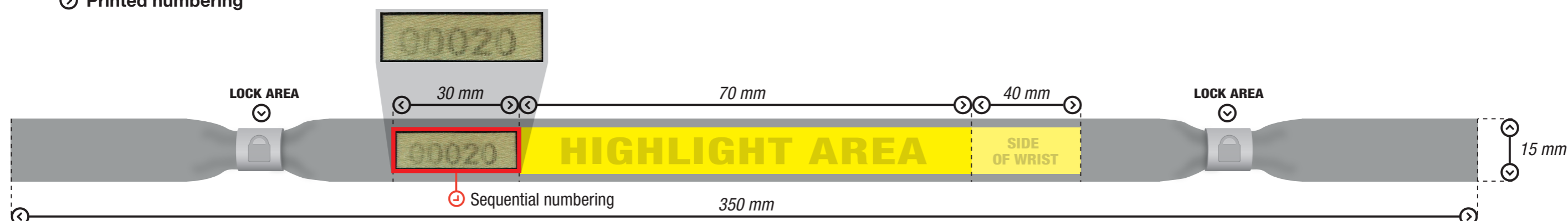
Neon ink print

Very bright neon ink in 4 different colors:



6. SEQUENTIAL NUMBERING:

Printed numbering



Cut numbering

