

Sure-Lock Seal

The Sure-Lock® Door Seal is an economical, metal trailer seal that can be provided in either tin or galvanized steel finish for rust resistance.



Applications

- Doors
- Gates
- Railroad Cars
- Hatches
- Inventory Control
- Truck Trailers

Features

- Economical; simple to install.
- Locking housing protected by scored metal cover.
- Two locking bars assure positive, audible seal engagement.
- Simple cutting tool required for removal.

Material

Galvanized or Tin Plated Steel

Dimensions

8-1/2" (215mm) x .374" (9.5mm)

Strength Characteristics

Average pull apart force is 130 lbs (59 kg)

Marking/Printing

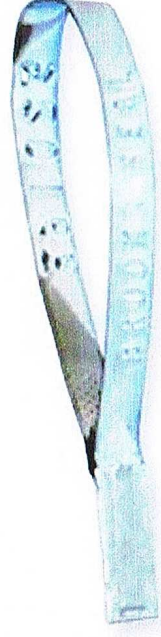
Embossed with consecutive numbers (7 digits) and customer name (22 letters including spaces).

Product Numbers

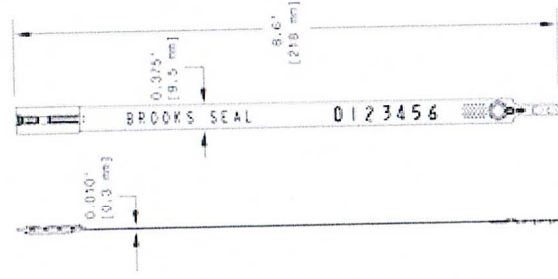
- 3748000 - Stock, galvanized body and cap
- 3748001 - Personalized, galvanized body and cap
- 3758000 - Stock, tinned body and cap
- 3758001 - Personalized, tinned body and cap

Packaging

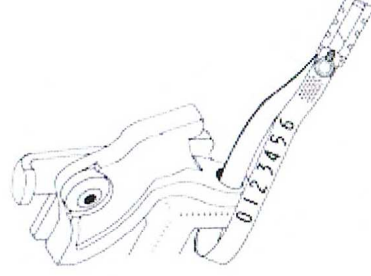
Standard Packaging: 100/Bundle - 1,000/Box - 5,000/Carton
Carton Dimensions: 27" x 14" x 8" (68cm x 35cm x 20cm)
Carton Weight: Gross: 70 lbs (32 kg) Net: 65 lbs (30 kg)



Technical Drawing



**Tyden Brammal
of Scandinavia**
Stolpegårdsvej 7
DK - 2820 Gentofte



TYDENBROOKS

Edgar House, Berrow Green Road
Martley, Worcestershire, WR6 6PQ, United Kingdom
TEL: +44(0) 1886 812 427 EMAIL: enquiry@tydenbrooks.eu

